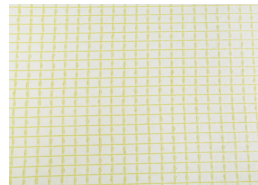


DATASHEET

Kiesel uncoupling membrane

Uncoupling membrane



- universally applicable
- short installation times
- waterproof and alkali resistant
- stress-relieving
- easy processing
- for uncoupling on Servofix SLA and many other suitable substrates

PRODUCT DESCRIPTION

Kiesel uncoupling membrane is a sandwich polyester fleece with fabric reinforcement for uncoupling and reducing the tension between top coverings made of natural stone or ceramic and the substrate. Occurring shear and tensile movements are thereby not initiated in the upper surface. Suitable for load-bearing substrates with low tendency to deform and crack, e.g. young concrete substrates (at least 28 days old in-situ concrete), concrete and screeds with subsided shrinkage cracks without height offset, OSB*, plywood* (*two layers). Kiesel uncoupling fabric can also be used in the **Servofix SLA** system.

Kiesel uncoupling fabric is crack-resistant, water- and rot-proof. In combination with the flexible, one-component waterproofing membrane **Servoflex DMS 1K Plus SuperTec**, **Kiesel uncoupling membrane** offers a stable uncoupling system even in exterior environment*

*Contact Kiesel technical department for more information before commencing any work.

SUBSTRATE PREPARATION

The substrate must be stable, sound, dry and clean. Prime on interior application using **Okatmos® UG 30**, **Okatmos® DSG**. Before installing the **Kiesel uncoupling membrane**, smooth out uneven areas with **Servofix**, **Servoplan** or **Servocret** levelers or patching compounds. Horizontal outdoor areas must have a sufficient slope as per local building codes.

PROCESSING

Roll out the **Kiesel uncoupling membrane** on the well prepared and correspondingly primed substrate, first loosely and precisely laid out and cut with a sharp cutter or scissors.

Pick up the fabric on one side and spread **Servoflex-Trio-SuperTec** or **Servoflex 4 royal** to the substrate with a 3 mm square notch trowel (TKB C3). Insert the fleece and rub thoroughly with a trowel. Then pull back the other side of the membrane and do the same. Avoid air pockets.

The **Kiesel uncoupling membrane** is laid "butt to butt". Cross joints are to be avoided. Sufficiently wide expansion joints must be created on rising construction or installation components.

The respective surface covering must be laid properly and professionally without further pretreatment measures in accordance with the applicable technical regulations.

The thin-bed mortar used depends on the type of covering material to be laid. When used in conjunction with a **Servoflex DMS 1 K SuperTec** waterproofing membrane, the waterproofing strips and sealing collars must be affixed to built-in components and rising components and reworked in accordance with our processing guidelines in 2 stages.

Kiesel uncoupling membrane is also a system component of **Servofix SLA**:

The **Kiesel uncoupling membrane** should only be used with a combination with **Servofix SLA** in rooms with a load of up to 1.5 kN / m².

In the exterior areas, the **Kiesel uncoupling membrane** must be used with **Servoflex DMS 1K Plus SuperTec**. First use 3mm square notch trowel and imbed uncoupling fabric in to the fresh **Servoflex DMS 1K Plus SuperTec** avoiding any air packets. After fully dry apply two more layers of **Servoflex DMS 1K Plus SuperTec** on top of the membrane waiting for each layer to dry completely. Each layer must have 2mm thickness.

SPECIFICATIONS

Color	cover fleece, reinforcement fabric yellow
Application	interior and exterior*
Format	25 lm x 100 cm = 25 m ² (1 mm thick) / 269 ft ² roll
Weight	ca. 200 g/m ²
Tensile strength	468 N (according to DIN 53 457)
Fire classification	B2
Floor heating system	suitable
Storage	standing, dry

* exterior with **Servoflex DMS 1K Plus SuperTec**

COVERAGE

1 m/m²

PACKAGING

Product description	Item no.	Item no.
25 lm x 100 cm = 25 m ² roll / 269 ft ² roll	60073	4015705600734

SAFETY NOTICE

The aforementioned information, especially the proposals for processing and utilizing our product, is based on our knowledge and experience. We recommend that you carry out your own tests in every case to ensure the suitability of our products for the intended process and processing purposes because of the different materials and the working conditions which lie beyond our area of influence. No liability can be derived from this advice or from verbal advice, unless we are responsible for (criminal) intent or gross negligence in this respect.

The aforementioned information, especially the proposals for processing and utilizing our product, is based on our knowledge and experience. We recommend that you carry out your own tests in every case to ensure the suitability of our products for the intended process and processing purposes because of the different materials and the working conditions which lie beyond our area of influence. No liability can be derived from this advice or from verbal advice, unless we are responsible for (criminal) intent or gross negligence in this respect.

Revised: 03.07.2019/me-dj